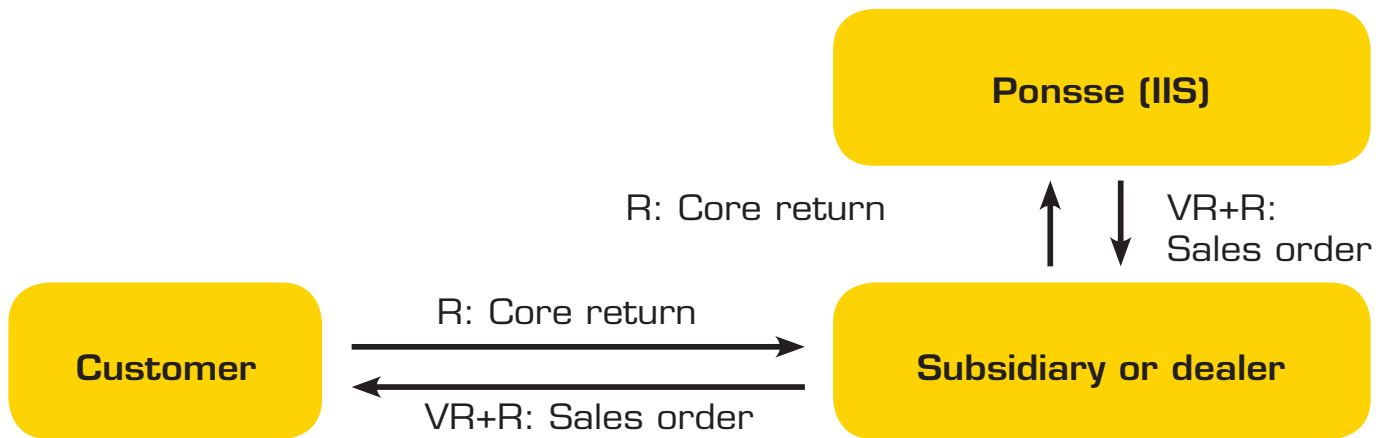


## Basic Machine Products

<b>Reman (Remanufactured parts)</b> .....	<b>21</b>	Windscreen wiper motor .....	<b>39</b>
<b>PONSSE Filter Sets</b> .....	<b>24</b>	Windscreen washer accessories.....	<b>39</b>
<b>Filter Sets</b> .....	<b>24</b>	Brake parts .....	<b>39</b>
For PONSSE machines with (6 syl MB) .....	<b>24</b>	Booster cylinder .....	<b>40</b>
Filter Sets (600 H).....	<b>24</b>	Brake charging valve .....	<b>40</b>
Filter Sets (1200 H).....	<b>24</b>	For valve block.....	<b>40</b>
Original PONSSE filters .....	<b>25</b>	Compressed air device .....	<b>40</b>
<b>Filters for PONSSE machines</b>		<b>Pause heaters and accessories</b> .....	<b>42</b>
<b>until year 2000</b> .....	<b>25</b>	Pause heaters.....	<b>42</b>
HS 10.....	<b>25</b>	<b>Pause heater accessories</b> .....	<b>42</b>
HS10 Cobra, Perkins engine .....	<b>25</b>	Ardic 954 DW .....	<b>42</b>
HS10 Cobra, Caterpillar engine .....	<b>26</b>	Eber DW5 .....	<b>42</b>
HS15, Valmet 411 engine .....	<b>26</b>	Eber DW7 .....	<b>43</b>
HS15, Valmet 420 engine .....	<b>27</b>	Webasto Thermo 90s .....	<b>43</b>
HS15, Perkins engine.....	<b>27</b>	Webasto 90ST.....	<b>43</b>
HS15, Custom Perkins engine.....	<b>27</b>	Webasto T50.....	<b>44</b>
HS16 Ergo, Caterpillar engine .....	<b>28</b>	<b>Air-conditioning and heatin components</b> .....	<b>44</b>
S10.....	<b>28</b>	Fan motors.....	<b>44</b>
S10 Caribou, Perkins engine .....	<b>28</b>	Heating components .....	<b>44</b>
S15 yellow-green .....	<b>29</b>	Air-conditioning components .....	<b>44</b>
S15, Valmet 411 engine .....	<b>29</b>	Alternators and reconditioned alternators .....	<b>45</b>
S15, Valmet 420 engine .....	<b>29</b>	Alternator regulators.....	<b>45</b>
S15, Perkins engine.....	<b>29</b>	Starters for PONSSE machines.....	<b>45</b>
S15, Custom Perkins engine .....	<b>30</b>	Reconditioned starters for PONSSE machines.....	<b>45</b>
S15 EH.....	<b>30</b>	V-belts .....	<b>46</b>
S15 Bison, Perkins engine .....	<b>31</b>	For PONSSE machines with MB-engines.....	<b>46</b>
S16 Buffalo, Caterpillar engine .....	<b>31</b>	<b>Batteries</b> .....	<b>46</b>
<b>Filters for PONSSE machines</b>		OPTI batteries .....	<b>46</b>
<b>with MB-engine</b> .....	<b>32</b>	Batteries .....	<b>46</b>
Ergo .....	<b>32</b>	<b>Bulbs</b> .....	<b>47</b>
Beaver .....	<b>32</b>	Working light bulbs .....	<b>47</b>
Buffalo .....	<b>32</b>	Large bulbs with metal base.....	<b>47</b>
Buffalo King .....	<b>32</b>	Instrument panel light bulbs.....	<b>47</b>
Bison .....	<b>33</b>	For TP2000 cabin .....	<b>47</b>
Caribou .....	<b>33</b>	Working lights.....	<b>47</b>
Wisent.....	<b>33</b>	PONSSE Working lights.....	<b>48</b>
Gazelle .....	<b>34</b>	<b>Audio</b> .....	<b>48</b>
Buffalo Dual .....	<b>34</b>	Radio .....	<b>48</b>
Wisent Dual.....	<b>34</b>	Loudspeaker .....	<b>48</b>
Elk.....	<b>35</b>	<b>Antennas</b> .....	<b>48</b>
Elephant.....	<b>35</b>	Radio antenna, BOSCH .....	<b>48</b>
Bear .....	<b>35</b>	GSM antenna.....	<b>48</b>
<b>Ponsse paints</b> .....	<b>36</b>	Combined GSM+radio antenna.....	<b>49</b>
Spray cans .....	<b>36</b>	Window antenna .....	<b>49</b>
3-litre containers .....	<b>36</b>	GPS "TATTI" .....	<b>49</b>
1-litre containers .....	<b>36</b>	Phones .....	<b>49</b>
<b>Seats and seat accessories</b> .....	<b>37</b>	Reversing camera.....	<b>49</b>
Seats.....	<b>37</b>	OPTI accessories .....	<b>49</b>
Seat bases and seat base accessories.....	<b>37</b>	Printers .....	<b>49</b>
Seat levellers .....	<b>37</b>	<b>Printer cartridges</b> .....	<b>50</b>
Headrests .....	<b>37</b>	HP 450 colour cartridges.....	<b>50</b>
Seat side supports.....	<b>38</b>	Canon i70, i80, i90 .....	<b>50</b>
Seat belts.....	<b>38</b>	BJC 80/85.....	<b>50</b>
Seat slipcover .....	<b>38</b>	Electrical connector set .....	<b>50</b>
Seat covers .....	<b>38</b>	<b>Fuel container accessories</b> .....	<b>51</b>
<b>Windscreen wiper accessories</b> .....	<b>38</b>	Ponsse Fuel containers.....	<b>51</b>
Wiper blades .....	<b>38</b>	Fuel tank accessories.....	<b>51</b>
Wiper arms.....	<b>39</b>	Base machine's cable step.....	<b>51</b>

## REMAN (Remanufactured parts)

Reman parts is a service developed by Ponsse and is based on recycling and reconditioning used service parts. If a part is damaged the logger now has a flexible and cost-efficient way to make sure that his/her forest machine runs uninterrupted. Ponsse offers a quick and cost-effective alternative for replacing damaged parts: Return the damaged part to us and replace it by buying a reman part which Ponsse has carefully reconditioned. You will receive a credit for the returned part when you buy a reman part which means considerable save for you.



Reman number	Description	Type	Core number
0026293VR	TORQUE CONVERTER	HS15 C272.7-42	0026293R
0026295VR	TORQUE CONVERTER	S15 C2262-78	0026295R
0026917VR	DIESEL ENGINE	REMAN.PERKINS 1006-6T YB80602	0026917R
0026918VR	DIESEL ENGINE	REMAN.PERKINS AB80432/1004-4T	0026918R
00285751VR	CONTROL UNIT	REMAN. SIT RIGHT 44999	00285751R
0048052VR	PLANETARY GEAR	REMAN. RR750+RF5/65+154-6	0048052R
0052200VR	HYDRAULIC PUMP	REMAN. SA507184 90L100EA5	0052200R
0052201VR	HYDRAULIC MOTOR	REMAN.SA507166	0052201R
0055041VR	HYDRAULIC MOTOR	REMAN. SA509090 SAUER 51V11	0055041R
0055042VR	HYDRAULIC PUMP	REMAN. SA509202 90R100EA5	0055042R
0055066VR	DIESEL ENGINE	REMAN.PERKINS YB80851/1006-6T	0055066R
0055074VR	TRANSFER BOX	REMAN. PO25 NAF VG35-529	0055074R
0055077VR	PUMP DIVIDER GEARBOX	REMAN.HS-16 PVG160-3	0055077R
00551073VR	DIFFERENTIAL GEAR	REMAN. CH176/223	00551073R
0055113VR	PLANETARY GEAR	REMAN.RR810 154B454	0055113R
0055117VR	DIRECTIONAL VALVE	REMAN. 0811404603 REGEL	0055117R
0055151VR	TRANSMISSION	REMAN. PO27/VAIHTO-OSA	0055151R
0055239VR	HYDRAULIC PUMP	REMAN. REX A11VLO130LRDS	0055239R
0055302VR	HYDRAULIC PUMP	REMAN. REX A11VLO130DRS	0055302R
00566483VR	DIFFERENTIAL GEAR	REMAN.CH151/60 COMPLETE	00566483R

\* Reman selection within the European Union area.

# Basic Machine Products

Reman number	Description	Type	Core number
0056887VR	HYDRAULIC PUMP	REMAN.REX A11V0130DRS	0056887R
0056994VR	DIESEL ENGINE	REMAN:PERKINS AM36068/1004-40TW	0056994R
0057078VR	ROTATOR	AV12S 5112096IND	0057078R
0057189VR	DIESEL ENGINE	REMAN.PERKINS YH36206/1006-60T FA	0057189R
0057277VR	PUMP DIVIDER GEARBOX	REMAN.HS-10 PVG160-2	0057277R
0057890VR	PUMP OF THE DRIVING TRANSMISSION	REMAN.SA513494 90R130	0057890R
0057891VR	HYDRAULIC MOTOR	REMAN.SA513495 / 51V160	0057891R
0057892VR	ROTATOR	REMAN. AV14SA IND5114098	0057892R
0058013VR	HYDRAULIC MOTOR	REMAN.513740 / 51V160	0058013R
0058014VR	PUMP OF THE DRIVING TRANSMISSION	REMAN.SA513656 90R130	0058014R
0058064VR	BEARING	REMAN.BUFFALO ROLLIX	0058064R
0058147VR	HYDRAULIC PUMP	REMAN. 511897 90R100	0058147R
0058173VR	HYDRAULIC PUMP	REMAN. 02041099A11VLO130D	0058173R
0058174VR	HYDRAULIC PUMP	REMAN.REX A11VLO130DRS	0058174R
0058195VR	HYDRAULIC PUMP	REMANUF. SA515426 90L100	0058195R
0058203VR	HYDRAULIC PUMP	REMAN.REX A11VLO190EP2S	0058203R
0058226VR	HYDRAULIC PUMP	REMAN.SA515456 90R100	0058226R
0058444VR	HYDRAULIC PUMP	REMAN.REX A11VLO130DRS	0058444R
0058699VR	ROTATOR	REMANUF. 2770401908 BBR15	0058699R
0058703VR	TRANSFER BOX	REMAN. NAF P046 VG75-501	0058703R
0058842VR	HYDRAULIC MOTOR	REMAN. SA516514 / 51V160	0058842R
0059565VR	HYDRAULIC PUMP	REMAN.REX A11VLO145	0059565R
0059694VR	PUMP DIVIDER GEARBOX	REMAN. STIEBEL 4380-25	0059694R
0059857VR	TRANSFER BOX	REMAN.CH 360/62 I=5.04/1.	0059857R
0060980VR	HYDRAULIC PUMP	REMAN.REX A11VLO145DRS	0060980R
0061320VR	HYDRAULIC PUMP	REMAN.REX A11VLO190	0061320R
0061408VR	SEAT STABILIZER	REMAN. SITRIGHT	0061408R
0061903VR	HYDRAULIC PUMP	REMAN.REX A11VLO145DRS	0061903R
0061904VR	HYDRAULIC PUMP	REMAN.REX A11VLO190DRS	0061904R
0061905VR	HYDRAULIC PUMP	REMAN.REX A11VLO190EP2S	0061905R
0061906VR	HYDRAULIC PUMP	REMAN.REX A11VLO145DRS	0061906R
0062224VR	CENTRAL LUBRICATION PUMP	REMANUF. SM11395530 MLP	0062224R
0062540VR	PUMP OF THE DRIVING TRANSMISSION	REMAN.SA520456 90R130	0062540R
0063003VR	ROTATOR	7112096 H122 INDEXATOR	0063003R
00634863VR	DIFFERENTIAL GEAR	REMAN. CH151/71/7C	00634863R
0063747VR	ENGINE	REMAN. MB OM906 LA 205KW	0063747R
0064228VR	ROTATOR	REMAN.2770403208 BBR15HD,	0064228R
0064468VR	HYDRAULIC PUMP	REMAN. REX A11VLO190DRS	0064468R
0064532VR	HYDRAULIC PUMP	REMAN.REX A11V0145	0064532R
0064547VR	HYDRAULIC PUMP	REMAN. REX A11V0145LRDS	0064547R
0065006VR	PUMP OF THE DRIVING TRANSMISSION	REMAN.REX A4VG125EP2D1	0065006R

Reman number	Description	Type	Core number
0065701VR	ROTATOR	REMAN.2770404208 BBR15HD	0065701R
0065848VR	HYDRAULIC MOTOR	REMAN. SA516514 51V160RC8ND	0065848R
0066668VR	HYDRAULIC MOTOR	REMAN.3785572 F12-030	0066668R
602D33VR	BASE, LOWER PART	MACHINING, HN125	602D33R
603D26VR	BASE UPPER PART	MACHINING, HN125	603D26R
CATOR1015VR	WATER PUMP	REMAN.CAT WATER PUMP	CATOR1015R
CATOR2897VR	COMPRESSOR	REMAN. CAT COPMRESSOR	CATOR2897R
CATOR4263VR	START MOTOR	REMAN. CAT START MOTOR	CATOR4263R
CATOR8684VR	SOLENOID	REMAN.CAT SOLENOID	CATOR8684R
CATOR8839VR	OIL COOLER	REMAN. CAT COOLER	CATOR8839R
CATOR9613VR	CYLINDER HEAD	REMAN. CAT CYLINDER HEAD	CATOR9613R
NAF2401174VR	DIFFERENTIAL GEAR	REMAN. PO35 DIFFERENTIAL	NAF2401174R
NAF2401201VR	DIFFERENTIAL GEAR	REMAN. PO21	NAF2401201R
NAF2401220VR	DIFFERENTIAL GEAR	REMAN. PO34	NAF2401220R
NAF2401228VR	DIFFERENTIAL GEAR	REMAN. PO40/PO41	NAF2401228R
NAF2401234VR	DIFFERENTIAL GEAR	REMAN. PO21/PO31/PO44	NAF2401234R
NAF2401298VR	DIFFERENTIAL GEAR	REMAN. PO39/SAP75	NAF2401298R
NAF60240100560VR	DIFFERENTIAL GEAR	REMAN. PO12 REAR END AND	NAF60240100560R
0056708VR	DIESEL ENGINE	REMAN.PERKINS AD80719/1004-4TW	0056708R
0026908V	ENGINE	REMAN. 420DWI VALMET, VL8	
00551072V	HUB	REMAN. CH 176/223 HUB	
00566481V	BOGIE CASING	REMAN. CH151/60 COMPLETE	
00566482V	HUB	REMANUF.CH151/60 COMPLETE	
00577831V	BOGIE CASING	REMAN. PO41	
0057785V	SPLITTER BOX	REMAN. PO42 NAF	
0058472V	DIESEL ENGINE	REMAN.CAT 3116TA	
0061395V	TRANSFER BOX	REMAN.CH360/64 7CHD I=6.0	
00614201V	BOGIE CASING	COMPLETE CH 151/68R/7C	
00614202V	HUB	REMAN. CH 151/68	
00618393V	DIFFERENTIAL GEAR	REMAN. CH150R/63	
0062524V	HYDRAULIC PUMP	REMANUF. P2145S3844	
00634862V	HUB	REMAN.CH151R/71/7C	
00637493V	DIFFERENTIAL GEAR	REMAN. CH176HD356 6C	
0064469V	PUMP OF THE DRIVING TRANSMISSION	REMAN.REX A4VG180EP2D1/	
0064513V	PLANETARY GEAR	REMAN. RR510SI/5.8+OMTS M	
0066801V	PLANETARY GEAR	REMAN. RR810 MI SP 154F65	
DC9040967699V	TURBOCHARGER	REMAN. MB 125 KW OM904 EUROMOD 2	
DC9060961199V	TURBOCHARGER	REMAN.MB 170/180KW OM906	
NAF2402158V	PLANETARY GEAR	Reman. HUB PO30/PO40/PO41/PO43	
P24313V	SLEW BEARING	REMAN. P24313 BEAR	
P24494V	COOLER	REMAN. OM904LA EUROMOT3A	

## PONSSE FILTER SETS

Now you can get from Ponsse all the necessary filters for all your scheduled maintenance in a convenient and economical package. You can easily order the filter set for your machine type with only one part number.

### Benefits of the filter set

- save time during maintenance
- get the filters you need more economically
- all the appropriate filters are on hand during maintenance
- all filter sets are of Ponsse's original quality

## Filter Sets



### FOR PONSSE MACHINES WITH (6 syl MB)

Description	No.	
Bear	0066496	
Ergo	0066496	
Elephant	0066496	
Buffalo	0066496	
Buffalo King	0066496	



### FILTER SETS (600 H)

Description	No.	
Beaver	0066522	
Elk	0066522	
Gazelle	0066522	
Wisent	0066522	



### FILTER SETS (1200 H)

Description	No.	
ERGO 050001-051136	0064727	
*ERGO2008 051137 →	00647271	
BEAVER 040001-040549	0064728	
*BEAVER 040550 →	00647281	
HS16 COBRA CAT	0064729	
HS10 COBRA CAT	0064730	
Buffalo	0064731	
Wisent / Elk	0064732	
Bison	0064733	
Caribou	0064734	
S16 Buffalo Cat	0064735	
Bear	0066018	
Elephant	0066019	

\* Note! Pressure filter not included.

## Original PONSSE filters

By using the original Ponsse filters you can ensure that the system works reliably. The machine's service intervals are determined according to the filtering capacity of the original filters. When using generic parts, their functionality cannot be known during the service interval determined by Ponsse. Even though the filters look alike, their flow routes can differ to the extent where the full filtering circulation is not completed. There are also differences in the capacity and service life of filtering elements. A simple test is to compare the weight of the filtering elements. Lighter generic filters contain fewer filtering layers and supporting structures. If the filter's filtering capacity is not sufficient to cover the entire service interval, the filter will become clogged. Because of weaker supporting structures, it may tear and contaminate the entire system.

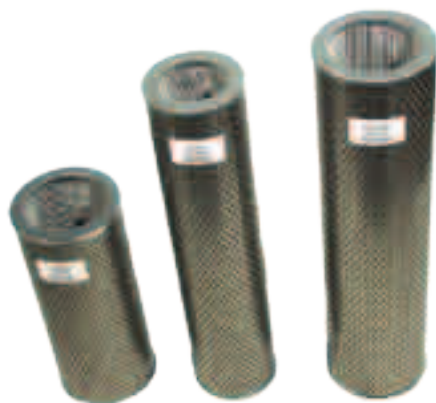
### FILTERS FOR PONSSE MACHINES UNTIL YEAR 2000



HS 10	
Description	No.
Servo	0036673
Working pressure (2)	0012958
Hydraulic oil return (2)	0061311
Torque converter drive transmission	0042194
Torque converter drive transmission	(0013706 No. 0-59)
Breather, tank	(0009755)
Breather, tank	0009756
Air filter, fine	0038148
Air filter, fine	(0038142)
Air filter raw	803A0303
Air filter raw	1281143
Air filter engine, outer	0007768
Air filter engine, inner	0007769
Engine oil	0013250
Air filter engine	(0019133)
Fuel	0019059

HS10 Cobra, Perkins engine	
Description	No.
Working pressure (2)	0012956
Hydraulic oil return (2)	0061012
Servo (2)	0036673
Sauer drive transmission	0019541
Cooling circulation	0055233
Breather, tank (2)	0009756
Air filter, fine	0038148
Air filter raw	1281143
Air filter engine, outer	0055199
Air filter engine, inner	0055200
Air filter engine (2)	0067410
Engine oil (2)	0035360
Fuel	0067411
Water separator	0067412

## FILTERS FOR PONSSE MACHINES UNTIL YEAR 2000



### HS10 Cobra, Caterpillar engine

Description	No.	
Working pressure (2)	0012956	
Hydraulic oil return (2)	0061012	
Servo (2)	0036673	
Sauer drive transmission	0019541	
Cooling circulation	0055233	
Breather, compressor	0009755	
Breather, tank	0009756	
Air filter, fine	0038148	
Air filter raw	1281143	
Air filter engine, outer	0055199	
Air filter engine, inner	0055200	
Engine oil	0067406	
Fuel	0067407	
Water separator	0067408	
Water separator	(0067409)	

### HS15, Valmet 411 engine

Description	No.	
Working pressure	0012956	
Servo (2)	0036673	
Hydraulic oil return (2)	0061311	
Clark transmission	0009753	
Breather, tank	0009756	
Air filter, fine	0038142	
Air filter raw	803A0303	
Air filter engine	0007768	
Air filter engine	0007769	
Fuel	BOS1457434154	
Engine oil	0029934	

## FILTERS FOR PONSSE MACHINES UNTIL YEAR 2000



### HS15, Valmet 420 engine

Description	No.	
Working pressure	0012956	
Servo (2)	0036673	
Hydraulic oil return (2)	0061311	
Clark transmission	0009753	
Breather, tank	0009756	
Air filter, fine	0038148	
Air filter, fine	0038142	
Air filter raw	803A0303	
Air filter engine, outer	0007768	
Air filter engine, inner	0007769	
Fuel	BOS1457434154	
Engine oil	0029934	

### HS15, Perkins engine

Description	No.	
Working pressure	0012956	
Servo (2)	0036673	
Hydraulic oil return (2)	0061311	
Clark transmission	0009753	
Breather, tank	0009756	
Air filter, fine	0038148	
Air filter, fine	0038142	
Air filter raw	803A0303	
Air filter engine, outer	0038143 ulko	
Air filter engine, inner	0038144	
Engine oil (2)	0035360	
Fuel (2)	0019133	

### HS15, Custom Perkins engine

Description	No.	
Working pressure	0012956	
Servo (2)	0036673	
Hydraulic oil return (2)	0061311	
Clark transmission	0009753	
Breather, tank	0009756	
Air filter, fine	0038148	
Air filter engine, outer	0038143	
Air filter engine, inner	0038144	
Engine oil (2)	0035360	
Fuel	0067411	
Water separator	0067412	

## FILTERS FOR PONSSE MACHINES UNTIL YEAR 2000



### HS16 Ergo, Caterpillar engine

Description	No.	
Working pressure (2)	0012956	
Hydraulic oil return (2)	0061012	
Servo (2)	0036673	
Sauer drive transmission	0019541	
Cooling circulation (2)	0055233	
Breather, compressor	0009755	
Breather, tank	0009756	
Air filter, fine	0038148	
Air filter raw	1281143	
Air filter engine, outer	0055199 ulko	
Air filter engine, inner	0055200	
Engine oil	0067406	
Fuel	0067407	
Water separator	0067408	
Water separator	(0067409)	

### S10

Description	No.	
Servo	0036673	
Hydraulic oil return	0061311	
Working pressure	0042194	
Working pressure	0013706 No.0-59	
Breather, tank	0009756	
Air filter, fine	0038142	
Air filter raw	803A0303	
Air filter engine, outer	0007768	
Air filter engine, inner	0007769	
Engine oil	0013250	
Fuel	0019059	
Fuel	0067407	

### S10 Caribou, Perkins engine

Description	No.	
Servo	0036673	
Sauer drive transmission	0019541	
Hydraulic oil return	0061311	
Cooling circulation	0055233	
Breather, tank	0009755	
Breather, tank	0009756	
Air filter, fine	0038142	
Air filter raw	803A0303	
Air filter engine, outer	0007768 ulko	
Air filter engine, inner	0007769	
Engine oil	0013250	
Fuel	0067410	

## FILTERS FOR PONSSE MACHINES UNTIL YEAR 2000



### S15 yellow-green

Description	No.	
Servo	0036673	
Hydraulic oil return	0012955	
Clark transmission	0009753	
Breather, tank	0009756	
Air filter, fine	0038133 (0,4m2)	
Air filter engine, outer	0029918 ulko	
Air filter engine, inner	0029884	
Fuel	BOS1457434154	
Engine oil	0029934	

### S15, Valmet 411 engine

Description	No.	
Servo	0036673	
Hydraulic oil return	0061311	
Clark transmission	0009753	
Breather, tank	0009756	
Air filter, fine	0038142	
Air filter raw	803A0303	
Air filter engine, outer	0007768 ulko	
Air filter engine, inner	0007769	
Fuel	BOS1457434154	
Engine oil	0029934	

### S15, Valmet 420 engine

Description	No.	
Servo	0036673	
Hydraulic oil return	0061311	
Clark transmission	0009753	
Breather, tank	0009756	
Air filter, fine	0038142	
Air filter raw	803A0303	
Air filter engine, outer	0007768 ulko	
Air filter engine, inner	0007769	
Fuel	BOS1457434154	
Engine oil	VL836647133	

### S15, Perkins engine

Description	No.	
Servo	0036673	
Hydraulic oil return	0061311	
Clark transmission	0009753	
Breather, tank	0009756	
Air filter, fine	0038142	
Air filter raw	803A0303	
Air filter engine, outer	0038143 ulko	
Air filter engine, inner	0038144	
Fuel (2)	0019133	
Engine oil (2)	0035360	

## FILTERS FOR PONSSE MACHINES UNTIL YEAR 2000



### S15, Custom Perkins engine

Description	No.
Servo	0036673
Hydraulic oil return	0061311
Clark transmission	0009753
Breather, tank	0009756
Air filter, fine	0038142
Air filter raw	803A0303
Air filter engine, outer	0007768 ulko
Air filter engine, inner	0007769
Fuel	0067411
Engine oil (2)	VL836647133
Water separator	0067412

### S15 EH

Description	No.
Servo	0036673
Sauer drive transmission	0019541
Hydraulic oil return	0061311
Cooling circulation	0055233
Breather, tank	0009756
Air filter, fine	0038142
Air filter raw	803A0303
Air filter engine, outer	0007768 ulko
Air filter engine, inner	0007769
Fuel	0067411
Engine oil (2)	VL836647133
Water separator	0067412

## FILTERS FOR PONSSE MACHINES UNTIL YEAR 2000



### S15 Bison, Perkins engine

Description	No.
Hydraulic oil return	0061012
Servo (2)	0036673
Sauer drive transmission	0019541
Cooling circulation	0055233
Breather, tank	0009755
Breather, tank	0009756
Air filter, fine	0038142
Air filter raw	803A0303
Air filter engine, outer	0055199 ulko
Air filter engine, inner	0055200
Fuel (2)	0067410
Engine oil (2)	0035360

### S16 Buffalo, Caterpillar engine

Description	No.
Hydraulic oil return	0061012
Servo (2)	0036673
Sauer drive transmission	0019541
Cooling circulation	0055233
Breather, tank	0009755
Breather, tank	0009756
Air filter, fine	0038142

Description	No.
Air filter raw	803A0303
Air filter engine, outer	0055199 ulko
Air filter engine, inner	0055200
Engine oil	0067406
Fuel	0067407
Water separator	0067408
Water separator	0067409

## FILTERS FOR PONSSE MACHINES WITH MB-ENGINE



### ERGO

Description	No.
Working pressure (2)	0012956
Hydraulic oil return (2)	0061012
Servo	0036673
Sauer drive transmission	0019541
Cooling circulation	0055233
Breather, tank	0009756
Engine 6 cyl. Inner	0060251
Engine 6 cyl. Outer	0060161
Cabin outer	0060597
Cabin inner	0060598
Engine oil 6 cyl.	0059057
Fuel	0059055
Water separator	0063422

### BEAVER

Description	No.
Working pressure	0012956
Hydraulic oil return	0061012
Servo	0036673
Sauer drive transmission	0019541
Cooling circulation	0055233
Breather, tank	0009756
Engine 4 cyl. Inner	0060250
Engine 4 cyl. Outer	0060160
Cabin outer	0060597
Cabin inner	0060598

Description	No.
Engine oil 4 cyl.	0059056
Fuel	0059055
Water separator	0063422

### BUFFALO

Description	No.
Hydraulic oil return	0061012
Servo	0036673
Sauer drive transmission	0019541
Cooling circulation	0055233
Breather, tank	0009755
Engine 6 cyl. Inner	0060251
Engine 6 cyl. Outer	1160161
Cabin outer	0060597
Cabin inner	0060598
Engine oil 6 cyl.	0059057
Fuel	0059055
Water separator	0063422

### BUFFALO KING

Description	No.
Hydraulic oil return	0061012
Servo	0036673
Sauer drive transmission	0019541
Cooling circulation	0055233
Breather, tank	0009755
Engine 6 cyl. Inner	0060251
Engine 6 cyl. Outer	1160161
Cabin outer	0060597
Cabin inner	0060598
Engine oil 6 cyl.	0059057
Fuel	0059055
Water separator	0063422

## FILTERS FOR PONSSE MACHINES WITH MB-ENGINE



### BISON

Description	No.
Hydraulic oil return	0061012
Servo	0036673
Sauer drive transmission	0019541
Cooling circulation	0055233
Breather, tank	0009755
Engine 4 cyl. Inner	0060250
Engine 4 cyl. Outer	0060160
Cabin outer	0060597
Cabin inner	0060598
Engine oil 4 cyl.	0059056
Fuel	0059055
Water separator	0063422

### CARIBOU

Description	No.
Servo	0036673
Sauer drive transmission	0019541
Hydraulic oil return	0061311
Cooling circulation	0055233
Breather, tank	0009755
Engine 4 cyl. Inner	0060250
Engine 4 cyl. Outer	0060160
Cabin outer	0060597
Cabin inner	0060598
Engine oil 4 cyl.	0059056
Fuel	0059055
Water separator	0063422

### WISENT

Description	No.
Hydraulic oil return	0061012
Servo	0036673
Sauer drive transmission	0019541
Breather, tank	0009756
Engine 4 cyl. Inner	0060250
Engine 4 cyl. Outer	0060160
Cabin outer	0060597
Cabin inner	0060598
Engine oil 4 cyl.	0059056
Fuel	0059055
Water separator	0063422

## FILTERS FOR PONSSE MACHINES WITH MB-ENGINE



### GAZELLE

Description	No.	
Hydraulic oil return	0061012	
Servo	0036673	
REX drive transmission	0059624	
Sauer drive transmission	0019541	
Cooling circulation	0055233	
Breather, tank	0009756	
Engine 4 cyl. Inner	0060250	
Engine 4 cyl. Outer	0060160	
Cabin outer	0060597	
Cabin inner	0060598	
Engine oil 4 cyl.	0059056	
Fuel	0059055	
Water separator	0063422	

### BUFFALO DUAL

Description	No.	
Hydraulic oil return	0061012	
Servo	0036673	
Sauer drive transmission	0019541	
Cooling circulation	0055233	
Breather, tank	0009755	
Engine 6 cyl. Inner	0060251	
Engine 6 cyl. Outer	0060161	
Cabin outer	0060597	
Cabin inner	0060598	
Engine oil 6 cyl.	0059057	
Fuel	0059055	
Water separator	0063422	

### WISENT DUAL

Description	No.	
Hydraulic oil return	0061012	
Servo	0036673	
Sauer drive transmission	0019541	
Cooling circulation	0055233	
Breather, tank	0009756	
Cabin outer	0060597	
Cabin inner	0060598	
Engine oil 4 cyl.	0059056	
Fuel	0059055	
Water separator	0063422	

## FILTERS FOR PONSSE MACHINES WITH MB-ENGINE



### ELK

Description	No.
Working pressure	0012956
Hydraulic oil return	0061012
Servo	0036673
Breather, tank	0009756
Engine 4 cyl. Inner	0060250
Engine 4 cyl. Outer	0060160
Cabin outer	0060597
Cabin inner	0060598
Engine oil 4 cyl.	0059056
Fuel	0059055
Water separator	0063422

### ELEPHANT

Description	No.
Hydraulic oil return	0061012
Servo	0036673
REX drive transmission	0065401
Sauer drive transmission	0063019
Cooling circulation	0055233
Breather, tank	0009755
Engine 6 cyl. Inner	0060251
Engine 6 cyl. Outer	0060161
Cabin outer	0060597
Cabin inner	0060598
Engine oil 6 cyl.	0059057
Fuel	0059055
Water separator	0063422

### BEAR

Description	No.
Working pressure (2)	0012956
Hydraulic oil return (2)	0061012
Servo (2)	0036673
REX drive transmission	0059624
Cooling circulation (2)	0055233
Breather, tank	0009756
Engine 6 cyl. Inner	0060251
Engine 6 cyl. Outer	0060161
Cabin outer	0060597
Cabin inner	0060598
Engine oil 6 cyl.	0059057
Fuel	0059055
Water separator	0063422

## Ponsse paints



Description		No.	
Green	TM293	0035816	
Old grey (aluminium frames)	446C	0035811	
Yellow RAL	PONSSE 1003	0067143	



### SPRAY CANS

Description		No.	
Dark grey	RAL7021	0035832	
Light grey	RAL7005	0035833	
Yellow (MB engine machines)	RAL1003	0064178	
Silver grey (MB)		0060823	
Old grey (aluminium frames)	446C	0035820	
Matt black	TM121	0029595	
Yellow (yellow-green machines)	VOV80	0029611	
Green	TM293	0029603	

### 1-LITRE CONTAINERS

Description	No.	
Silver grey, MB	0062047	
Paint thinner 10	0035824	



### 3-LITRE CONTAINERS

Description		No.	
Dark grey	RAL7021	0029758	
Light grey	RAL7005	0029752	
Yellow (yellow-green machines)	RAL1028	0029761	
Yellow (MB engine machines)	RAL1003	0064938	